

# FanDuel - Core

Insight network



## SUMMARY OF BENEFITS

VISION CARE SERVICES	IN-NETWORK MEMBER COST AT PLUS PROVIDERS	IN-NETWORK MEMBER COST	OUT-OF-NETWORK MEMBER REIMBURSEMENT
<b>EXAM SERVICES</b>			
Exam	\$0 copay	\$10 copay	Up to \$45
Retinal imaging	Up to \$39	Up to \$39	Not covered
<b>CONTACTS LENS FIT AND FOLLOW-UP</b>			
Fit and Follow-up - Standard	Up to \$40;	Up to \$40;	Not covered
Fit and Follow-up - Premium	10% off retail price	10% off retail price	Not covered
<b>FRAME</b>			
Frame	\$0 copay; 20% off balance over \$200 allowance	\$0 copay; 20% off balance over \$150 allowance	Up to \$105
<b>STANDARD PLASTIC LENSES</b>			
Single Vision	\$25 copay	\$25 copay	Up to \$45
Bifocal	\$25 copay	\$25 copay	Up to \$65
Trifocal/Lenticular	\$25 copay	\$25 copay	Up to \$125
Progressive - Standard	\$80 copay	\$80 copay	Up to \$50
Progressive - Premium Tier 1 - 4	\$110 - 200 copay	\$110 - 200 copay	Up to \$50
<b>LENS OPTIONS</b>			
Anti Reflective Coating - Standard	\$45 copay	\$45 copay	Up to \$23
Anti Reflective Coating - Premium Tier 1 - 2	\$57 - 68	\$57 - 68	Up to \$23
Anti Reflective Coating - Premium Tier 3	\$85 copay	\$85 copay	Up to \$23
Photochromic - Non-Glass	\$75	\$75	Not covered
Polycarbonate - Standard	\$40	\$40	Not covered
Polycarbonate - Std < 19 years of age	\$0 copay	\$0 copay	Up to \$20
Scratch Coating/Tint/UV Treatment	\$15	\$15	Not covered
All Other Lens Options	20% off retail price	20% off retail price	Not covered
<b>CONTACT LENSES</b>			
Contacts - Conventional	\$0 copay; 15% off balance over \$120 allowance	\$0 copay; 15% off balance over \$120 allowance	Up to \$105
Contacts - Disposable	\$0 copay; 100% of balance over \$120 allowance	\$0 copay; 100% of balance over \$120 allowance	Up to \$105
Contacts - Medically Necessary	\$0 copay; paid-in-full	\$0 copay; paid-in-full	Up to \$300
<b>OTHER</b>			
Hearing Care from Amplifon Network	Discounts on hearing aids; call 1.877.203.0675	Discounts on hearing aids; call 1.877.203.0675	Not covered
Lasik or PRK from U.S. Laser Network	15% off retail or 5% off promo price; call 1.800.988.4221	15% off retail or 5% off promo price; call 1.800.988.4221	Not covered

## FREQUENCY

Exam  
Frame  
Lens  
Contact Lens

## ALLOWED FREQUENCY – ADULTS

once every plan year  
once every other plan year  
once every plan year  
once every plan year

## ALLOWED FREQUENCY – KIDS

once every plan year  
once every other plan year  
once every plan year  
once every plan year

Log into [eyemed.com/member](https://eyemed.com/member) to see all plans included with your benefits. EyeMed reserves the right to make changes to the products available on each tier. All providers are not required to carry all brands on all tiers. For current listing of brands by tier, call 866-939-3633. No benefits will be paid for services or materials connected with or charges arising from: medical or surgical treatment, services or supplies for the treatment of the eye, eyes or supporting structures; Refraction, when not provided as part of a Comprehensive Eye Examination; services provided as a result of any Workers' Compensation law, or similar legislation, or required by any governmental agency or program whether federal, state or subdivisions thereof; Orthoptic or vision training, subnormal vision aids and any associated supplemental testing; Aniseikonic lenses; any Vision Examination or any corrective Vision Materials required by a Policyholder as a condition of employment; safety eyewear; solutions, cleaning products or frame cases; non-prescription sunglasses plano (non-prescription)lenses; plano (non-prescription) contact lenses; two pair of glasses in lieu of bifocals; electronic vision devices; services rendered after the date an Insured Person ceases to be covered under the Policy, except when Vision Materials ordered before coverage ended are delivered, and the services rendered to the Insured Person are within 31 days from the date of such order; or lost or broken lenses, frames, glasses, or contact lenses that are replaced before the next Benefit Frequency when Vision Materials would next become available. Fees charged by a Provider for services other than a covered benefit and any local, state or Federal taxes must be paid in full by the Insured Person to the Provider. Such fees, taxes or materials are not covered under the Policy. Some provisions, benefits, exclusions or limitations listed herein may vary by state. Plan discounts cannot be combined with any other discounts or promotional offers. In certain states members may be required to pay the full retail rate and not the negotiated discount rate with certain participating providers. Please see online provider locator to determine which participating providers have agreed to the discounted rate. Underwritten by Fidelity Security Life Insurance Company of New York, Brewster, New York. Fidelity Security Life Policy number VCN-19, form number MN-28.VCN-19, form number MN-1/MN-2/MN-3. This is a snapshot of your benefits. The Certificate of Insurance is on file with your employer.

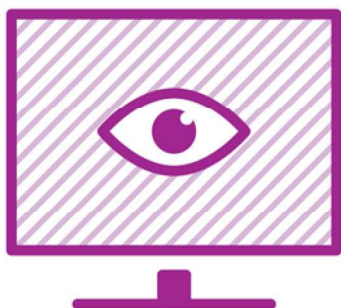
# Savings plus convenience plus choice

*PLUS Providers add another  
layer of coverage*

*Staying in-network helps you save  
money on eye exams, frames and  
lenses. Visiting a PLUS Provider is  
designed to help you save even  
more. And since PLUS Providers are  
already in our network, the  
additional perks are built right into  
your vision benefits.*

*No promo codes, no coupons, no  
paperwork. The same vision  
benefits, plus a little more savings.*

eye  
Med



## The choice is yours

*Find plenty of in-network eye doctors – including PLUS Providers  
– on our Provider Locator. Just look for the PLUS.*

*Need extra assistance? Contact us at 1.866.939.3633  
or visit [eyemed.com](http://eyemed.com).*

INDEPENDENT  
PROVIDER  
NETWORK



LENSCRAFTERS

PEARLE  
VISION

OPTICAL