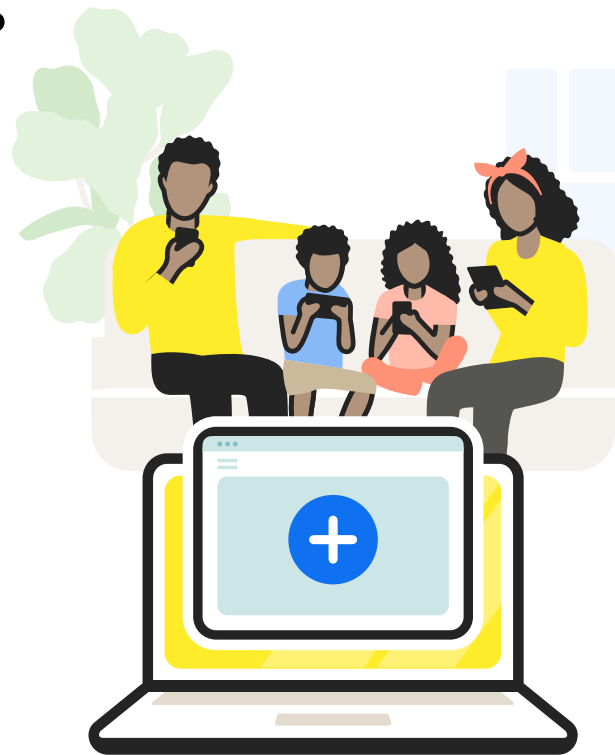


Help protect your family too.

Add family members to your Norton LifeLock Benefit Plan with Family Coverage directly through your Norton dashboard.

How do I add my dependents?

1. Establish your login credentials by going to [Norton.com/EBSetup](https://norton.com/EBSetup) if you have not already completed this step.
2. **Once logged in at my.Norton.com**, you can view dependents already on your plan by hovering over My Account in the upper right corner and selecting My Subscriptions.
3. To add dependents that are not already listed, simply select Enroll Members and follow the steps to add a family member to your identity monitoring. You will need their personal information, including their Social Security number, to complete their enrollment.



How do I remove dependents?

To remove dependents you will simply select Unsubscribe Member next to the name of the dependent you wish to disenroll.

If the dependent was added through your employer you will need to remove that dependent through your employer as there will not be an option to unsubscribe the dependent from your dashboard.

my.norton.com | 800-607-9174